

## Classic Globe 180 LED 3000K

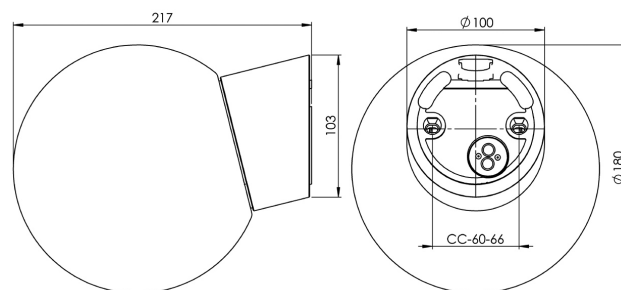
The Classic series is an old favourite of our assortment. Ideal in most areas where functionality and timeless design are the key words. Classic is available in different combinations and are also available with a grey or a brown glazed base as option.

|                  |               |
|------------------|---------------|
| EAN / GTIN       | 7312906045836 |
| E-number         | 7502746       |
| Article no.      | 6045-800-16   |
| Type designation | 52726/LED     |



### Specification

|                       |  |
|-----------------------|--|
| Material              | Porcelain  |
| Base colour           | Black (NCS S 9000-N)   |
| Glass                 | Matt opal glass  |
| Glass thread (mm)     | 84,5 mm  |
| Glass gasket          | Silicone   |
| Weight                | 1,18 kg  |
| Diameter (mm)         | 180  |
| Height (mm)           | 222  |
| Lamp holder           | LED  |
| Light source          | LED module, 8W **  |
| Effect                | 8W   |
| Lumen, light source   | 800lm  |
| Lumen, luminaires     | 687  |
| Colour temperature    | 3000K  |
| MacAdam               | 3  |
| Life span             | L80/B10: 50 000 h  |
| Ra                    | Min 90   |
| Rated voltage         | 230V   |
| Dimmable              | Back edge only - We recommend dimmers from ION, Schneider, Vadsbo and Niko |
| IP class              | IP54   |
| Insulation class      | I  |
| Energy class          | F  |
| D class               | No   |
| IK class              | IK02   |
| Ta                    | -30 - +25  |
| Installation          | Wall   |
| CC measurement (mm)   | 60-66  |
| Knock out opening     | 1 - demands glands   |
| Cable inlet           | Bottom inlet   |
| Cable glands          | Bottom inlet   |
| Cable area, max       | Max 3 x 2,5 mm <sup>2</sup>  |
| Bridging              | Yes  |
| Surface mounted cable | Yes  |
| Connection            | Terminal block   |
| Family                | Classic Globe  |
| Design                | Ifö Electric   |



### Luminaire specific information

Angeled 14 degrees.

### Maintenance

Disconnect the power to the luminaire. Unscrew the glass and clean it. Do not use detergents that contain solvents. Replace light source if necessary. Check the gasket and replace it if necessary. Screw the shade back on.

### Spare parts

Shade globe Ø 180 mm matt opal, Article no.: 1-6136-1  
Gasket silicone for thread 84,5 mm, Article no.: 02786-9  
LED module 8W - 3000K, Article no.: 1-54057-930

\*\* Only use dimmers with manual trailing edge control. Do not use leading edge dimming or automatic setting as this can shorten the lifespan of the module.

If the luminaire is modified the person responsible for the modification shall be considered manufacturer. Subject to errors in text. We reserve the right to change the technical specifications (without notice).