

Base thread 84,5 mm black IP44 straight G9 25W

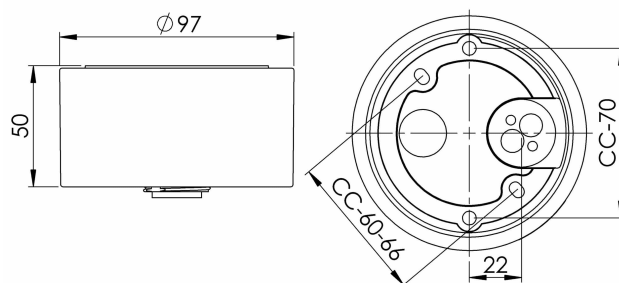
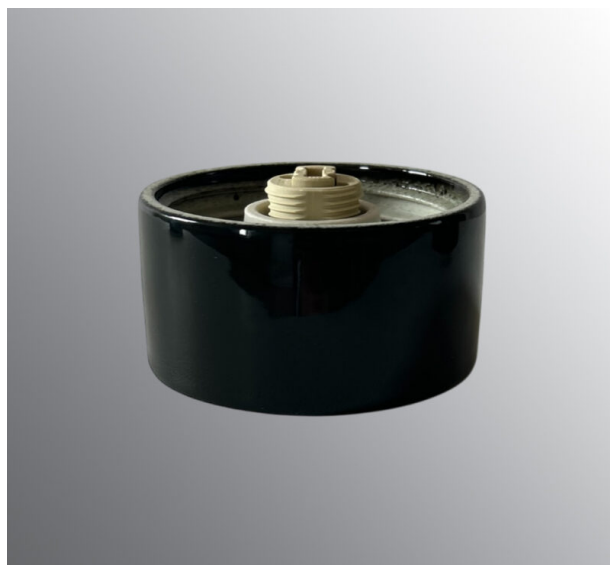
Base thread 84,5 mm. Black. IP44. Straight. G9. 25W. With bottom lead-in.

EAN / GTIN	7312901571767
E-number	7511733
Article no.	55717-200-16
Type designation	7201



Specification

Material	Porcelain
Base colour	Brown (NCS 7810-Y66R)
Glass thread (mm)	84,5 mm
Glass gasket	Silicone
Weight	0,41 kg
Diameter (mm)	100
Height (mm)	50
Lamp holder	G9
Light source	G9, max 25W (ej inkl.)
Effect	Max 25W
Rated voltage	230V
IP class	IP44
Insulation class	II
D class	No
IK class	IK02
Ta	-30 - +25
Installation	Ceiling/wall
CC measurement (mm)	60-66, 70
Knock out opening	0
Cable inlet	Bottom inlet
Cable area, max	Max 2 x 2,5 mm ²
Bridging	Yes
Surface mounted cable	No
Connection	Mantle screw
Family	Bases



Maintenance

Disconnect the power to the luminaire. Unscrew the glass and clean it. Do not use detergents that contain solvents. Replace light source if necessary. Check the gasket and replace it if necessary. Screw the shade back on.

Spare parts

Gasket silicone for thread 84,5 mm, Article no.: 02786-9

If the base is modified the person responsible for the modification shall be considered manufacturer. Subject to errors in text. We reserve the right to change the technical specifications (without notice).